



# Methodology

Thirteen ecosystem units were defined for the assessment of the Pantanal biome by crossing the vegetation maps of the Project RADAMBRASIL (1982) and the flood regime data, according to PADOVANI (2010). The criteria A and B were applied to quantify the reduction in the geographic distribution and evaluate the ecosystem loss.

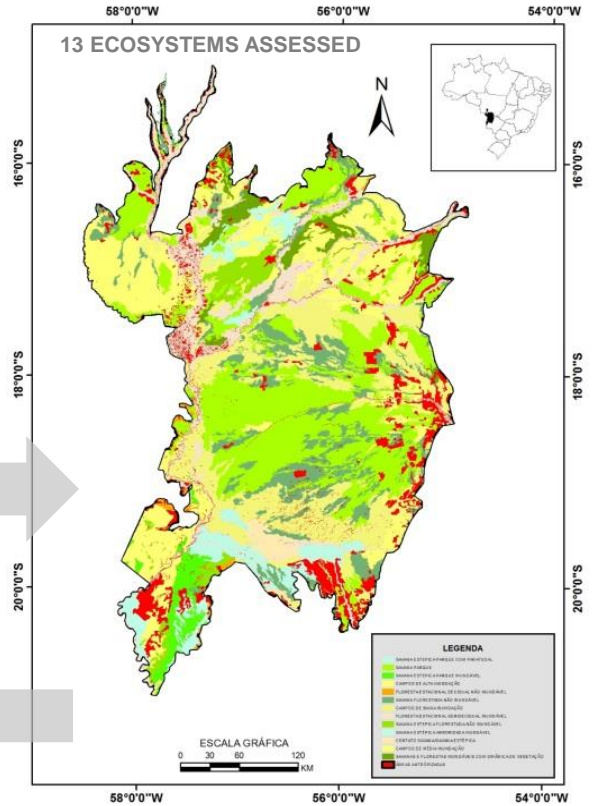
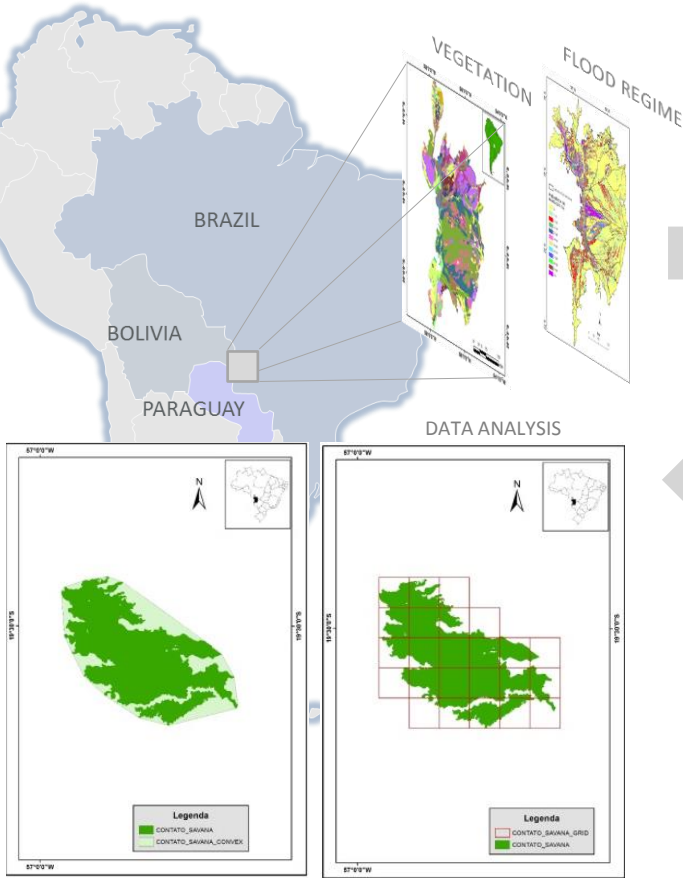


Figure 3. Map of the 13 ecosystems of the Brazilian Pantanal, defined according to the vegetation and flood regime.

## Preliminary Results

With the application of criteria A and B, we came to the conclusion that one ecosystem is Critically Endangered, three are Endangered, three were considered Vulnerable and six are Least Concern.

ECOSYSTEM	CRITERIA	CATEGORY
SAVANA ESTÉPICA FLORESTADA NÃO INUNDÁVEL		LC
SAVANA ESTÉPICA ARBORIZADA INUNDÁVEL		LC
CAMPOS DE MÉDIA INUNDAÇÃO		LC
CAMPOS DE BAIXA INUNDAÇÃO		LC
FLORESTA ESTACIONAL SEMIDECIDUAL INUNDÁVEL		LC
SAVANA FLORESTADA NÃO INUNDÁVEL		LC
FLORESTA ESTACIONAL DECIDUAL NÃO INUNDÁVEL	B1ai	VU
SAVANAS E FLORESTAS INUNDÁVEIS COM DINÂMICA DE VEGETAÇÃO	B1aii	VU
SAVANA PARQUE	A2b	VU
SAVANA ESTÉPICA PARQUE COM PARATUDAL	B1ai	EN
SAVANA ESTEPICA PARQUE INUNDÁVEL	B1ai	EN
CAMPOS DE ALTA INUNDAÇÃO	A2b ; B1aii	EN
CONTATO SAVANA/SAVANA ESTÉPICA	B1aii	CR